

Your eye pressure may drop as quickly as 24 hours after the iStent™ surgery. However, you may not feel any different. You will be asked to return one day after the procedure and again after several weeks and months so that your progress can be observed.

In some patients, the iStent™ has been so effective that it has reduced or eliminated the need for glaucoma eye drops. This is important in people who have trouble putting in their eye drops. Because each patient is different and the exact pressure result for your eye cannot be foreseen, you should rely on your doctor to evaluate the results and the use of your medications.

Safety of the iStent™ Surgery

The micro stent has been implanted in over 150 human eyes. The six-month results of a clinical trial conducted in Europe in 47 patients have shown an average pressure decrease of 5.7mm Hg and a 67% reduction in medication use. This study is ongoing but shows that the micro stent is safe and effective for patients with open-angle glaucoma. The micro stent has received approval to be sold in Europe for the treatment of glaucoma.

What Are The Side Effects of The Surgery?

Unlike some glaucoma medications, the incidence of allergy or systemic side effects has been zero. Complications, such as inflammation, are minimal. These side effects usually resolve within a few weeks. Ask your doctor for details. If the device does not function as planned, it should not create any additional harm to your eye.

Manufacturer:
[Glaukos Corporation, 26061 Merit Circle, Suite 101
Laguna Hills, CA 92653 USA 1.949.367.9600](#)

Authorized EU Representative:
MediTech Strategic Consultants B.V.
Maastrichterlaan 127,
6291 EN Vaals, The Netherlands
Tel: +31 43 306 3320

NOT AVAILABLE FOR SALE IN THE U.S..



PN: GL-0059 05/05

Treating Glaucoma with the

iStent™
TRABECULAR MICRO-BYPASS

Restore natural outflow pathways

ioP

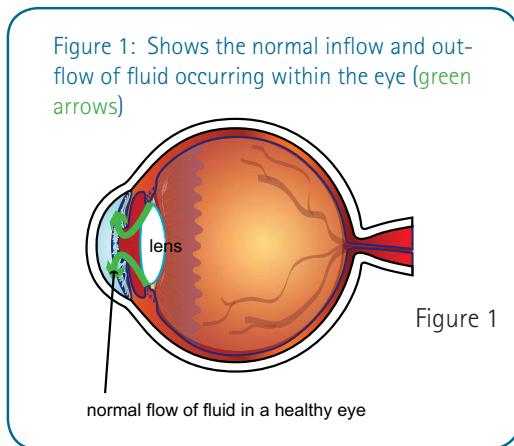
patient brochure



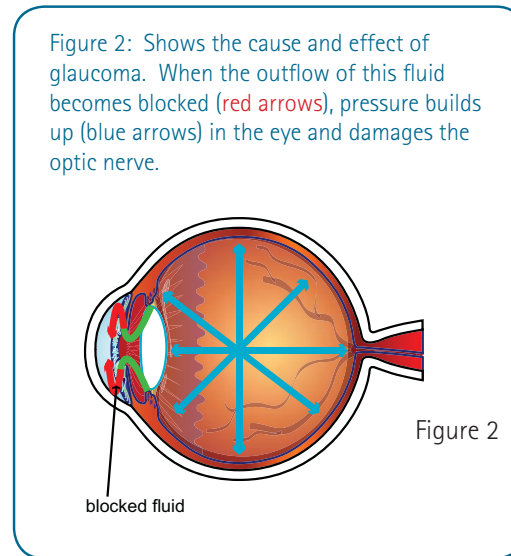
What is Open-Angle Glaucoma

Open-angle glaucoma is the most common form of glaucoma. The risk of developing open-angle glaucoma increases with age. Most people have no symptoms and no early warning signs. If open angle glaucoma is not treated, it can cause a loss of vision. This type of glaucoma develops slowly and sometimes without noticeable sight loss for many years.

In a healthy eye, fluids inside your eye maintain your eye's shape and allow it to function properly. This fluid is continuously produced and circulated in the eye to nourish it before draining out through a filter-like system of spongy tissue called the trabecular meshwork to a channel called Schlemm's canal. A healthy eye produces the fluid at the same rate that it drains fluid, thus maintaining a normal pressure. (see Figure 1)



In glaucoma, the drainage system becomes semi blocked and pressure increases as fluid builds up in the eye. Blockage can occur in any part of the drainage system, but it most commonly occurs in the trabecular meshwork (see Figure 2).



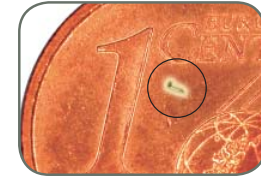
Treating Open-Angle Glaucoma

Damage caused by glaucoma can't be reversed. But with treatment, glaucoma can be controlled. Currently, glaucoma is controlled by lowering your eye pressure. Eye drops are the primary treatment for open-angle glaucoma. These medications work by decreasing the production of fluid and/or by increasing drainage of the fluid.

You are probably using medications to control your eye pressure. In some cases, medications alone are not enough to control eye pressure. If this happens, eye surgery may be necessary.

iStent™ Surgery

The iStent™ is a new device that creates an opening for fluid to pass through the filter-like tissue while helping to open and increase drainage through the outflow channels. The stent is the smallest device implanted in the eye.



size of stent

In traditional glaucoma surgeries a small piece of the filter-like tissue is removed, allowing fluid to leave the eye which lowers eye pressure. The iStent™ surgery is less traumatic than traditional surgeries as the stent can be inserted through a very small opening or the same opening made during your cataract surgery. The iStent™ creates a canal which restores the natural flow of fluid in the eye through the main drainage channel called Schlemm's canal.

What Can I Expect After the iStent™ Surgery?

Any vision that you have already lost prior to surgery will not return. However, the surgery should increase the drainage of fluid and thereby lower the pressure in your eye, with the aim of preventing any additional vision loss.